

2007 Catalog
Fixed Limit

www.newmantools.com tel 1-800-465-1384 fax 1-800-605-2442

MEYER GAGE



ISO 9001
CERTIFIED

distributed by :

Newman Tools Inc.
185 Iber Rd.
Ottawa, Ontario, Canada K2S 1E7
Tel 613-836-6776 Fax 613-836-9070

Table of Contents

Corporate Message	2	Class X English Library Series	15
Individual Class Z Pins – English & Metric	4	MG-25 Series Class X Tenth Sets	16
Individual Class X Pins – English & Metric	5	Custom Length Class ZZ Gages	17
Individual Class XX Pins – English & Metric	5	Custom Length Class X Gages	18
GO/NOGO Assemblies - English	6	Taperlock Style Gages	19
GO/NOGO Assemblies - Metric	7	Trilock Style Gages	20
Gage Handles & Bushings	8	Ring Gages Chrome	21
Gage Storage Accessories	9	Ring Gages Steel & Carbide	22
Class Z English Gage Sets	10	Progressive Style Gages	23
Class Z English Library Series	11	Master Setting Disc	24
Class Z Metric Gage Sets	12	Hex Gages	25
Class Z Metric Library Series	13		
Class X English Gage Sets	14		



Table of Contents

DESCRIPTION	PRODUCT GROUP #	PAGE
TAPERLOCK STEEL THREAD PLUG GAGES.....		27-29
Class X Thread Gage Tolerances	—	
Taperlock Style Work Plug Gages	19-00T	
TAPERLOCK HSS THREAD PLUG GAGES TiN COATED.....		.30
TiN Coated Taperlock HSS	19-00TI	
TRILOCK REVERSIBLE STEEL THREAD PLUG GAGES.....		.31
Trilock Reversible Style	19-00TRI	
HELICAL COIL TAPERLOCK STEEL GAGES (STI).....		.32
Helical Coil Gages (STI)	19-00THC	
REVERSIBLE STEEL THREAD PLUG GAGES.....		.33
Reversible Style Work Plug Gages	19-00W REV	
THREAD RING GAGES – ENGLISH.....		34-35
Ring Gages	19-00R	
TRUNCATED THREAD SETTING PLUGS.....		36-37
Truncated Setting Plugs	19-00S	
STEEL TAPERLOCK METRIC THREAD PLUG GAGES.....		.38
Metric Taperlock Work Plug Gages.....	19-00MT	
REVERSIBLE STEEL METRIC THREAD PLUGS.....		.39
Reversible Metric Thread Plugs	19-00H	
Metric - Inch Pitch Equivalentents	—	
THREAD RING GAGES – METRIC.....		.40
Metric Thread Rings	19-00MR	
THREAD SETTING PLUGS – METRIC.....		.41
Truncated Setting Plugs	19-00MS	
TAPER PIPE GAGES - NPT.....		.42
Taper Pipe Gages - NPT Dimensions	—	
Ring Dimensions	—	
L1 Single End Plug Gages - NPT	19-00TP	
L1 Thin Ring Gages - NPTF	19-00T	
TAPER PIPE GAGES-NPTF.....		.43
Taper Pipe Gages - NPTF Dimensions	—	
Taper Pipe Gages - NPTF	19-00TPF	
GEAR MEASURING WIRES.....		44-45
Grade A Master Gear Wires	17-00	
Special Gear Measuring Wires +/- .000010	17-10	
Flatted Gear Wires	17-00	
Preservative & Lubricant	—	
3-WIRE THREAD MEASURING SYSTEM.....		46-47
60 Degree Thread 3-Wire Sets w/Holder	16-20H	
60 Degree Metric Thread Wire Sets w/Hldr	16-20H	
Thread Measuring Wire Sets	16-00S	
FLEXIBLE HOLE LOCATION GAGES.....		.48
Flexible Hole Location Gages	19-00HL	
CALIBRATION.....		.49
GAGE FACT SHEET (AND TOLERANCE CHART).....		.50
TABLE OF THREAD PITCH DIAMETER LIMITS.....		51-52



IMPROVED

English Individual Class Z Gage Pins*

Replace missing pins! Don't live with broken sets. We stock these replacement pins in even half thousand sizes for immediate shipment. All pins over .060" are laser marked with size and direction of tolerance. But we don't stop there, we've also added a serial number lasered onto each piece for traceability.

.005 to .0105
.011 to .0605
.061 to .5005
.501 to .6255
.626 to .7505
.751 to .8325
.833 to .9165
.917 to 1.0005



*IMPORTANT: Specify PLUS or MINUS when ordering individual members.

* Size increments available in .0005"

IMPROVED

Metric Individual Class Z Gage Pins*

Replace missing pins! Don't live with broken sets. We stock these replacement pins in all sizes for immediate shipment. All pins over 1.51mm are laser marked with size and direction of tolerance. But we don't stop there, we've also added a serial number lasered on to each piece for traceability.

.22 to 1.51
1.52 to 12.71
12.72 to 15.31
15.32 to 17.81
17.82 to 20.37
20.38 to 22.05
22.06 to 23.73
23.74 to 25.41



*IMPORTANT: Specify PLUS or MINUS when ordering individual members.

* Size increments available in .01mm

What's the *Big Deal* about Laser Marking?

Our computer based, non-contact, thermal process produces a permanent medical grade mark on our gages. Through computer monitoring the mark is carefully controlled to give consistent material penetration. This method gives superior quality control compared to other marking systems and traceability by serial number. All pins over .060" are marked with size and direction of tolerance.

CLASS X Individual Gage Pins*

These pins have the same features as our Class Z pins but with a .00004 tolerance limit and a .00002 roundness limit. They are great for your inspection needs or when you want to maximize your GO/NOGO tolerance limit. They're also a great way to calibrate measuring equipment, micrometers and calipers. We make all sizes for your special needs. All pins over .060" or 1.51 mm are laser marked with size and direction of tolerance. We've also added a serial number lasered onto each piece for traceability.

English

.0110 to .0759"
.0760 to .5009"
.5010 to .7499"
.7500 to 1.000"

Metric

.28 to 1.90mm
1.91 to 12.70mm
12.71 to 19.02mm
19.03 to 25.40mm



*Please Specify **PLUS** or **MINUS**.

Also Available **CLASS X BILATERAL** (split tolerance)

CLASS XX Individual Gage Pins*

When an even tighter tolerance is needed, Meyer Gage now makes XX pin gages. With a tolerance of .00002 and a roundness limit of .00001, it's our tightest tolerance yet for your most critical inspection needs. They're our best gages to calibrate your measuring equipment, micrometers and calipers. All pins over .060" or 1.51mm are laser marked with size and direction of tolerance. We've also added the serial number for traceability.

English

.0110 to .0759
.0760 to .5009
.5010 to .7499
.7500 to 1.000

Metric

.28 to 1.90mm
1.91 to 12.70mm
12.71 to 19.02mm
19.03 to 25.40mm



*Please Specify **PLUS** or **MINUS**

Also Available **CLASS XX BILATERAL** (split tolerance)



English GO/NOGO Gage Assemblies

Use these GO/NOGO assemblies for in-process inspection on the shop floor. Detect out of tolerances before your customer does. Available in English Class Z, Class X and Class XX.



ENGLISH GO/NOGO GAGES

Diameter Range	Class Z GO/NOGO Assembly	Class Z GO <i>or</i> NOGO Assembly	Class X GO/NOGO Assembly	Class X GO <i>or</i> NOGO Assembly	Class XX GO/NOGO Assembly	Class XX GO Assembly <i>or</i> NOGO Assembly
.011" - .0755"						
.076" - .1805"						
.181" - .2815"						
.282" - .4065"						
.407" - .5005"						
.501" - .5105"						
.511" - .6255"						
.626" - .6355"						
.636" - .7505"						
.751" - .7605"						
.761" - .8325"						
.833" - .9165"						
.917"-1.0005"						

One complete GO/NOGO gage includes: one Plus member (GO), one Minus member (NOGO), one Double End Handle with Bushings assembled.
 GO gage includes: one Plus member with Single End Handle and Bushing assembled.
 NOGO gage includes: one Minus member with Single End Handle and Bushing assembled.
 GO/NOGO gages are available with special diameter or length gages, prices on request.
 Gage Handles marked with size and direction of tolerance. *Additional markings



Metric GO/NOGO Gage Assemblies



Use the GO/NOGO assemblies for in-process inspection on the shop floor. Detect out of tolerances before your customer does. Available in Metric Class Z, Class X and Class XX.

METRIC GO/NOGO GAGES

Diameter Range (mm)	Class Z GO/NOGO Assembly	Class Z GO Assembly <i>or</i> NOGO Assembly	Class X GO/NOGO Assembly	Class X GO Assembly <i>or</i> NOGO Assembly	Class XX GO/NOGO Assembly	Class XX GO Assembly <i>or</i> NOGO Assembly
.22 - 1.90						
1.91 - 4.56						
4.57 - 7.14						
7.15 - 10.32						
10.33 - 12.70						
12.71 - 12.96						
12.97 - 15.30						
15.31 - 16.20						
16.21 - 19.30						
19.31 - 20.36						
20.37 - 22.04						
22.05 - 23.72						
23.73 - 25.41						

One complete GO/NOGO gage includes: one Plus member (GO), one Minus member (NOGO), one Double End Handle with Bushings assembled.
 GO gage includes: one Plus member with Single End Handle and Bushing assembled.
 NOGO gage includes: one Minus member with Single End Handle and Bushing assembled.
 GO/NOGO gages are available with special diameter or length gages, prices on request.
 Gage Handles marked with size and direction of tolerance. *Additional markings



Gage Accessories

Bushings

1W010 thru 5W510.....
6W532 thru 8W1.00.....

MATERIAL
1W thru 5W.....BRASS
6W thru 8W.....ALUMINUM



English Wire type, Cylindrical Gage Bushings

Bushing #	Range		Bushing #	Range		Bushing #	Range	
	Above	Thru		Above	Thru		Above	Thru
1W010	.005	.010	2W180	.173	.180	5W465	.450	.465
1W015	.010	.015	3W188	.180	.188	5W480	.465	.480
1W020	.015	.020	3W196	.188	.196	5W495	.480	.495
1W025	.020	.025	3W204	.196	.204	5W510	.495	.510
1W030	.025	.030	3W212	.204	.212	6W532	.510	.532
1W035	.030	.035	3W220	.212	.220	6W547	.532	.547
1W040	.035	.040	3W228	.220	.228	6W563	.547	.563
1W045	.040	.045	3W236	.228	.236	6W579	.563	.579
1W050	.045	.050	3W244	.236	.244	6W594	.579	.594
1W055	.050	.055	3W252	.244	.252	6W610	.594	.610
1W060	.055	.060	3W261	.252	.261	6W625	.610	.625
1W065	.060	.065	3W271	.261	.271	6W635	.625	.635
1W070	.065	.070	3W281	.271	.281	7W656	.635	.656
1W075	.070	.075	4W291	.281	.291	7W672	.656	.672
2W082	.075	.082	4W301	.291	.301	7W688	.672	.688
2W089	.082	.089	4W311	.301	.311	7W704	.688	.704
2W096	.089	.096	4W321	.311	.321	7W719	.704	.719
2W103	.096	.103	4W331	.321	.331	7W735	.719	.735
2W110	.103	.110	4W341	.331	.341	7W750	.735	.750
2W117	.110	.117	4W351	.341	.351	7W760	.750	.760
2W124	.117	.124	4W361	.351	.361	8W781	.760	.781
2W131	.124	.131	4W371	.361	.371	8W812	.781	.812
2W138	.131	.138	4W382	.371	.382	8W843	.812	.843
2W145	.138	.145	4W394	.382	.394	8W875	.843	.875
2W152	.145	.152	4W406	.394	.406	8W906	.875	.906
2W159	.152	.159	5W420	.406	.420	8W937	.906	.937
2W166	.159	.166	5W435	.420	.435	8W968	.937	.968
2W173	.166	.173	5W450	.435	.450	8W1.000	.968	1.010



Gage Handles

Plug Gage Diameter(mm)	Double End Handle #	Single End Handle #
.005"-.075" (.22 -1.90)	1	
.076"-.180" (1.91- 4.56)	2	
.181"-.281" (4.57-7.14)	3	
.282"-.406" (7.15 -10.32)	4	
.407"-.510" (10.33 -12.96)	5	
.511"-.635"(12.97-16.12)	6	
.636"-.760" (16.13-19.30)	7	
.761"-1.010"(19.31-25.65)	8	

Handles furnished without bushings. Bushings sold separately.
Custom Engraving available



Gage Storage Accessories

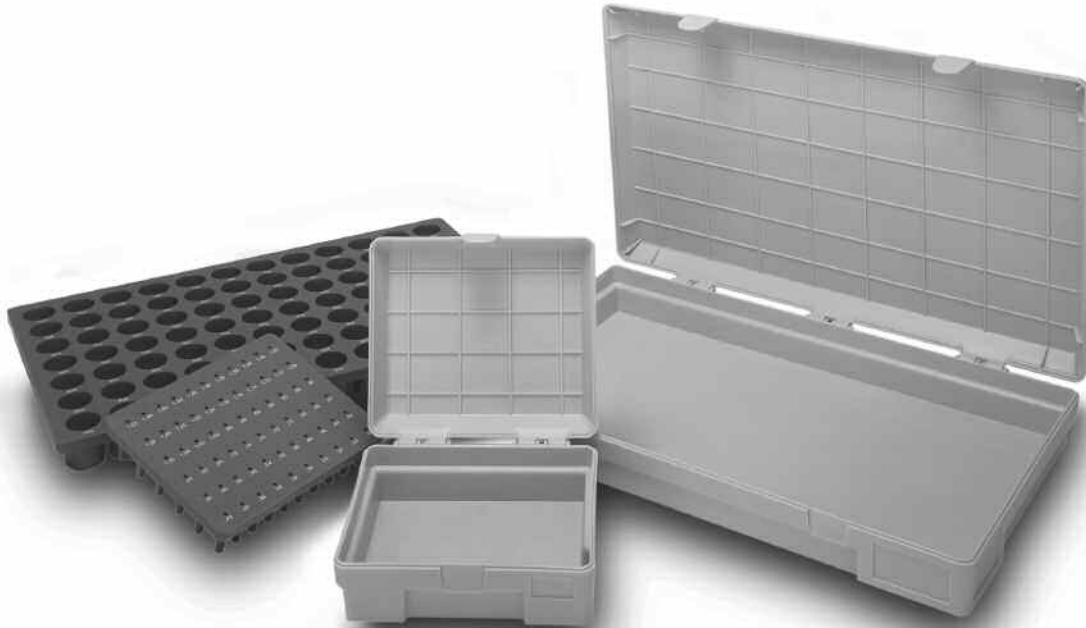
Durable Poly Cases

- Poly Case for M-O Set.....
 - Poly Case for M-1 thru M-8 Set.....
 - Poly Case and insert for M-O Set.....
 - Poly Case with insert for M-1 thru M-8 sets.....
- Each hole size marked on insert.

Poly Inserts

- Poly Insert for M-O set.....
- Poly Insert for M-1 thru M-8 sets...

Each hole size marked on insert.



Heavy Duty Metal Storage Cabinets



Upgrade Existing Sets

Model Number	Wt./Lbs		Price
L-E4	38	four drawer cabinet, empty	
L-IN4	46	four drawer cabinet with four inserts of your choice	



IMPROVED

English Gage Sets

Here is a comparison of the Class ZZ and the Class Z gage pin specifications.

OLD Class ZZ

Size deviation .0002"
Roundness geometry .0001"
Surface finish 10 micro

NEW Class Z

Size deviation .0001"
Roundness geometry .00005"
Surface finish 8 micro

The Meyer Gage Class Z gage pin will meet or exceed the requirements of Class ZZ, and can replace the Class ZZ in any situation or application.

Meyer Gage

Class Z Pin Sets

We started making the original ZZ back in 1965 and our competition has tried, but can't copy the quality of these affordable pin gage sets. We now have taken the extra step for the better pin gage, **Class Z**. Introducing the **MEYER Z**. A closer tolerance (.0001), more accurate and better for your needs. (See top right corner of page for details.) We have done it again. We've made a better pin gage that no other has attempted with the same great features listed below.



FEATURES:

MORE FEATURES THAN GAGES COSTING TWICE THE PRICE.

- All gages and sets are traceable to N.I.S.T.
- Boxes and gages both marked
- Size and serial number laser etched on each piece (M-O not etched)
- Material: 52100 Bearing Steel
- No sharp edges
- All members 2" long

USES:

- Checking locations
- Measuring hole sizes and depth
- GO & NO/GO gaging
- Setting micrometers
- Checking distances between holes

Finish:

- Centerless lapped
- Each gage is inspected and has a 8 microfinish or better
- Heat treated to a hardness of 60-62 Rockwell C
- All English gages with .0001" limit

Gage Set No.	Gage - Size	Pieces	Wt./Lbs.
M0M - minus	.011 to .060	50	1
M0P - plus	.011 to .060	50	1
M05M - minus	.0115 to .0605	50	1
M05P - plus	.0115 to .0605	50	1
M1M - minus	.061 to .250	190	7
M1P - plus	.061 to .250	190	7
M15M - minus	.0615 to .2505	190	7
M15P - plus	.0615 to .2505	190	7
C10M - minus	.011 to .250	240	7
C10P - plus	.011 to .250	240	7
C105M - minus	.0115 to .2505	240	7
C105P - plus	.0115 to .2505	240	7
M2M - minus	.251 to .500	250	23
M2P - plus	.251 to .500	250	23
M25M - minus	.2515 to .5005	250	23
M25P - plus	.2515 to .5005	250	23
M3M - minus	.501 to .625	125	24
M3P - plus	.501 to .625	125	24
M35M - minus	.5015 to .6255	125	24
M35P - plus	.5015 to .6255	125	24
M4M - minus	.626 to .750	125	33
M4P - plus	.626 to .750	125	33
M45M - minus	.6265 to .7505	125	33
M45P - plus	.6265 to .7505	125	33
M5M - minus	.751 to .832	82	29
M5P - plus	.751 to .832	82	29
M55M - minus	.7515 to .8325	82	29
M55P - plus	.7515 to .8325	82	29
M6M - minus	.833 to .916	84	35
M6P - plus	.833 to .916	84	35
M65M - minus	.8335 to .9165	84	35
M65P - plus	.8335 to .9165	84	35
M7M - minus	.917 to 1.000	84	41
M7P - plus	.917 to 1.000	84	41
M75M - minus	.9175 to 1.0005	84	41
M75P - plus	.9175 to 1.0005	84	41



English Library Series

.0001 CLASS Z LIBRARY SERIES

Model Number	Wt./Lbs.	Size Range	Number of Members
L-C - minus	120	.011" to .750"	(740 gages)
L-C - plus	120	.011" to .750"	(740 gages)
L-1 - minus	120	.061" to .750"	(690 gages)
L-1 - plus	120	.061" to .750"	(690 gages)
L-2 - minus	95	.061" to .5005"	(880 gages in .0005" increments)
L-2 - plus	95	.061" to .5005"	(880 gages in .0005" increments)
L-2C - minus	96	.011" to .5005"	(980 gages in .0005" increments)
L-2C - plus	96	.011" to .5005"	(980 gages in .0005" increments)
L-3** - minus	240	.061" to 1.000"	(940 gages)
L-3** - plus	240	.061" to 1.000"	(940 gages)
L-4** - minus	240	.011" to 1.000"	(990 gages)
L-4** - plus	240	.011" to 1.000"	(990 gages)
L-5 - minus	140	.751" to 1.000"	(250 gages)
L-5 - plus	140	.751" to 1.000"	(250 gages)

** Consists of two four-drawer cabinets

Upgrade Existing Sets

Model Number	Wt./Lbs	
L-E4	38	four drawer cabinet, empty
L-IN4	46	four drawer cabinet with four inserts of your choice



IMPROVED

Metric Gage Sets

Class Z

Just look at this selection of Metric gage pin sets. If we don't make it you probably don't need it! These sets have all the features of our English sets, but provide the finer increments in size that you just can't get by converting English to Metric.

Meyer Gage Class Z Pin Sets

FEATURES:
MORE FEATURES THAN GAGES COSTING TWICE THE PRICE.

- All gages and sets are traceable to N.I.S.T.
- Boxes and gages both marked
- Size and serial number laser etched on each piece (M-O not etched)
- Material: 52100 Bearing Steel
- No sharp edges
- 51mm overall length
- All sets in .02mm increments

USES:

- Checking locations
- Measuring hole sizes and depth
- GO & NO/GO gaging
- Setting micrometers
- Checking distances between holes

Finish:

- Centerless lapped
- Each gage is inspected and has a 8 micro-finish or better
- Heat treated to a hardness of 60-62 Rockwell C
- All metric gages with .0025mm tolerance limit



Gage Set No.	Gage - Size	Pieces	Wt./Lbs.
M0MMM - minus	.22 to 1.50	65	1
M0MMP - plus	.22 to 1.50	65	1
M01MMM - minus	.23 to 1.51	65	1
M01MMP - plus	.23 to 1.51	65	1
M1MMM - minus	1.52 to 7.70	310	10
M1MMP - plus	1.52 to 7.70	310	10
M11MMM - minus	1.53 to 7.71	310	10
M11MMP - plus	1.53 to 7.71	310	10
M2MMM - minus	7.72 to 12.70	250	25
M2MMP - plus	7.72 to 12.70	250	25
M21MMM - minus	7.73 to 12.71	250	25
M21MMP - plus	7.73 to 12.71	250	25
M3MMM - minus	12.72 to 15.30	130	24
M3MMP - plus	12.72 to 15.30	130	24
M31MMM - minus	12.73 to 15.31	130	24
M31MMP - plus	12.73 to 15.31	130	24
M4MMM - minus	15.32 to 17.80	125	30
M4MMP - plus	15.32 to 17.80	125	30
M41MMM - minus	15.33 to 17.81	125	30
M41MMP - plus	15.33 to 17.81	125	30
M5MMM - minus	17.82 to 20.36	128	38
M5MMP - plus	17.82 to 20.36	128	38
M51MMM - minus	17.83 to 20.37	128	38
M51MMP - plus	17.83 to 20.37	128	38
M6MMM - minus	20.38 to 22.04	84	32
M6MMP - plus	20.38 to 22.04	84	32
M61MMM - minus	20.39 to 22.05	84	32
M61MMP - plus	20.39 to 22.05	84	32
M7MMM - minus	22.06 to 23.72	84	37
M7MMP - plus	22.06 to 23.72	84	37
M71MMM - minus	22.07 to 23.73	84	37
M71MMP - plus	22.07 to 23.73	84	37
M8MMM - minus	23.74 to 25.40	84	41
M8MMP - plus	23.74 to 25.40	84	41
M81MMM - minus	23.75 to 25.41	84	41
M81MMP - plus	23.75 to 25.41	84	41

Metric Library Series

.0025 METRIC LIBRARY SERIES

Model Number	Wt./Lbs.	Size Range	Number of Members
L-10mm - minus	124	1.52mm to 17.80mm	(815 gages)
L-10mm - plus	124	1.52mm to 17.80mm	(815 gages)
L-11mm - minus	124	1.53mm to 17.81mm	(815 gages)
L-11mm - plus	124	1.53mm to 17.81mm	(815 gages)
L-20mm - minus	183	17.82mm to 25.40mm	(380 gages)
L-20mm - plus	183	17.82mm to 25.40mm	(380 gages)
L-21mm - minus	183	17.83mm to 25.41mm	(380 gages)
L-21mm - plus	183	17.83mm to 25.41mm	(380 gages)
L-30mm - minus**	305	1.52mm to 25.40mm	(1195 gages)
L-30mm - plus**	305	1.52mm to 25.40mm	(1195 gages)
L-31mm - minus**	305	1.53mm to 25.41mm	(1195 gages)
L-31mm - plus**	305	1.53mm to 25.41mm	(1195 gages)

** Consists of 2 four drawer cabinets

Upgrade Existing Sets

Model Number	Wt./Lbs.	
L-E4	38	four drawer cabinet, empty
L-IN4	46	four drawer cabinet with four inserts of your choice

*IMPORTANT: Specify PLUS or MINUS when ordering individual members.



Class X Gage Sets



100% Inspected for ACCURACY!

Offers the same "features" as our Class Z pin gages but with .00004" tolerance limit and .00002" roundness limit. These pins are perfect for critical inspection needs or when you want to maximize your GO/NOGO tolerance limits. They're also a great way to calibrate measuring equipment, micrometers and calipers.

FEATURES:

- All gages and sets are traceable to N.I.S.T.
- Boxes and gages both marked
- Size and serial number laser etched on each piece (M-OX not etched)
- Material: 52100 Bearing Steel
- No sharp edges
- All members 2" long

USES:

- Checking locations
- Measuring hole sizes and depth
- GO & NO/GO gaging
- Setting micrometers
- Checking distances between holes

Finish:

- Centerless lapped
- Each gage is inspected and has a 2 microfinish or better
- Heat treated to a hardness of 60-62 Rockwell C
- All English gages with .00004" limit

Gage Set No.	Gage - Size	Pieces	Wt./Lbs.
M0XM - minus	.011 to .060	50	1
M0XP - plus	.011 to .060	50	1
M05XM - minus	.0115 to .0605	50	1
M05XP - plus	.0115 to .0605	50	1
M1XM - minus	.061 to .250	190	7
M1XP - plus	.061 to .250	190	7
M15XM - minus	.0615 to .2505	190	7
M15XP - plus	.0615 to .2505	190	7
C10XM - minus	.011 to .250	240	7
C10XP - plus	.011 to .250	240	7
C105XM - minus	.0115 to .2505	240	7
C105XP - plus	.0115 to .2505	240	7
M2XM - minus	.251 to .500	250	23
M2XP - plus	.251 to .500	250	23
M25XM - minus	.2515 to .5005	250	23
M25XP - plus	.2515 to .5005	250	23
M3XM - minus	.501 to .625	125	24
M3XP - plus	.501 to .625	125	24
M35XM - minus	.5015 to .6255	125	24
M35XP - plus	.5015 to .6255	125	24
M4XM - minus	.626 to .750	125	33
M4XP - plus	.626 to .750	125	33
M45XM - minus	.6265 to .7505	125	33
M45XP - plus	.6265 to .7505	125	33
M5XM - minus	.751 to .832	82	29
M5XP - plus	.751 to .832	82	29
M55XM - minus	.7515 to .8325	82	29
M55XP - plus	.7515 to .8325	82	29
M6XM - minus	.833 to .916	84	35
M6XP - plus	.833 to .916	84	35
M65XM - minus	.8335 to .9165	84	35
M65XP - plus	.8335 to .9165	84	35
M7XM - minus	.917 to 1.000	84	41
M7XP - plus	.917 to 1.000	84	41
M75XM - minus	.9175 to 1.0005	84	41
M75XP - plus	.9175 to 1.0005	84	41

CLASS X Library Series

.00004" CLASS X LIBRARY SERIES

Model Number	Wt./Lbs.	Size Range	Number of Members
L-CX - minus	120	.011" to .750"	(740 gages)
L-CX - plus	120	.011" to .750"	(740 gages)
L-1X - minus	120	.061" to .750"	(690 gages)
L-1X - plus	120	.061" to .750"	(690 gages)
L-2X - minus	95	.061" to .5005"	(880 gages in .0005" increments)
L-2X - plus	95	.061" to .5005"	(880 gages in .0005" increments)
L-2CX - minus	96	.011" to .5005"	(980 gages in .0005" increments)
L-2CX - plus	96	.011" to .5005"	(980 gages in .0005" increments)
L-3X** - minus	240	.061" to 1.000"	(940 gages)
L-3X** - plus	240	.061" to 1.000"	(940 gages)
L-4X** - minus	240	.011" to 1.000"	(990 gages)
L-4X** - plus	240	.011" to 1.000"	(990 gages)

** Consists of two four-drawer cabinets

Upgrade Existing Sets

Model Number	Wt./Lbs	
L-E4	36	four drawer cabinet, empty
L-IN4	47	four drawer cabinet with four inserts of your choice



Class X

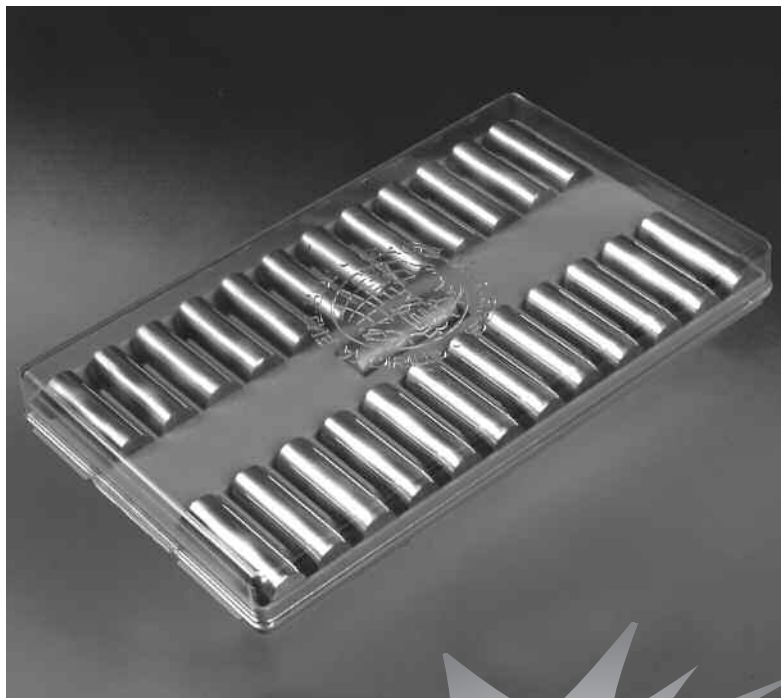
MG-25 Series

MG-25 PIN GAGE SETS

in .0001" increments or .01mm increments.

Used as masters to calibrate measuring equipment and check linearity of comparators, micrometers, and calipers. These "Tenth Step" gage sets have unlimited applications, such as quality control inspection, prototype work and production layout. Inspectors select from the range of pins to find the size of a hole or slot.

These round masters simulate a cylindrical part which, unlike flat blocks, can detect uneven wear on the tips of micrometers and calipers. The thin "line" of contact detects uneven face wear better than flat gage blocks with large contact area.



Features:

- Each set contains 25 pieces of Class X tolerance (.00004") gage pins. Traceable to NIST.
- Choice of two tolerances: Plus (+.00004") or Minus (-.00004")
- Sets consist of a center nominal size, and 12 gages larger in .0001" steps and 12 gages smaller in .0001" steps.
- Each gage is inspected and has a 2 microfinish or better.
- Heat treated and through hardened to 60-62 Rockwell C
- All pin gages over .060" or 1.51mm are laser marked with size direction of tolerance and serial number for traceability.

GAGE SET NO.	NOMINAL SIZE RANGE		
	<i>English</i>	<i>or</i>	<i>Metric</i>
MG1-25	.0110 to .0609		.28mm to 1.54mm
MG2-25	.0610 to .2509		1.55mm to 6.37mm
MG3-25	.2510 to .5009		6.38mm to 12.72mm
MG4-25	.5010 to .7499		12.73mm to 19.04mm
MG5-25	.7500 to .8129		19.05mm to 20.64mm

To order, simply select your nominal size from any .0001" English or .01mm Metric increment and direction of tolerance. Then refer to the above chart to find the set price.

Custom Length

Class ZZ Gages

Reversible pin gages up to 12" lengths. These are invaluable when you need to gage deep or hard to reach holes or slots.

- Centerless ground to a 10 microfinish or better
- Made from HSS Steel
- Plus, Minus or Bilateral tolerance
- NIST Traceable
- Stabilized and heat treated to 62-64RC

Diameter Range	2.5"	3"	4"	5"	6"	9"	12"
0.0110" to 0.0629"	0.279mm to 1.575mm						
0.0630" to 0.1879"	1.576mm to 4.750mm						
0.1880" to 0.2509"	4.751mm to 6.350mm						
0.2510" to 0.3129"	6.351mm to 7.925mm						
0.3130" to 0.3759"	7.926mm to 9.525mm						
0.3760" to 0.4389"	9.526mm to 11.125mm						
0.4390" to 0.5009"	11.126mm to 12.700mm						
0.5010" to 0.5319"	12.701mm to 13.487mm						
0.5320" to 0.5639"	13.488mm to 14.300mm						
0.5640" to 0.5949"	14.301mm to 15.088mm						
0.5950" to 0.6259"	15.089mm to 15.875mm						
0.6260" to 0.6569"	15.876mm to 16.662mm						
0.6570" to 0.6879"	16.663mm to 17.450mm						
0.6880" to 0.7189"	17.451mm to 18.237mm						
0.7190" to 0.7509"	18.238mm to 19.050mm						
0.7510" to 0.7819"	19.051mm to 19.837mm						
0.7820" to 0.8129"	19.838mm to 20.625mm						
0.8130" to 0.8439"	20.626mm to 21.412mm						
0.8440" to 0.8759"	21.413mm to 22.225mm						
0.8760" to 0.9069"	22.226mm to 23.012mm						
0.9070" to 0.9379"	23.013mm to 23.800mm						
0.9380" to 0.9689"	23.801mm to 24.587mm						
0.9690" to 1.0009"	24.588mm to 25.400mm						

No guarantee of straightness due to Centerless Grinding process on these products. Class ZZ custom length gages are not returnable for credit or cancellation.



Class X Gages

Reversible pin gages in English and Metric up to 6" lengths. Ideal for deep and hard to reach holes or slots.

- Centerless lapped to a 5 microfinish
- Up to 6" long
- NIST Traceable
- Stabilized and heat treated to 60-62 RC
- Plus, Minus or Bilateral tolerance

Custom Lengths

OVERALL LENGTH: 3 inches

Inch Size	Millimeter Size
.0100" to .0299"	.254mm to .761mm
.0300" to .0599"	.762mm to 1.52mm
.0600" to .2009"	1.53mm to 5.10mm
.2010" to .3749"	5.11mm to 9.52mm
.3750" to .6349"	9.53mm to 16.12mm
.6350" to .7500"	16.13mm to 19.05mm
.7501" to .8750"	19.06mm to 22.22mm
.8751" to 1.000"	22.23mm to 25.40mm

OVERALL LENGTH: 4 inches

Inch Size	Millimeter Size
.0100" to .0299"	.254mm to .761mm
.0300" to .0599"	.762mm to 1.52mm
.0600" to .2009"	1.53mm to 5.10mm
.2010" to .3749"	5.11mm to 9.52mm
.3750" to .6349"	9.53mm to 16.12mm
.6350" to .7500"	16.13mm to 19.05mm
.7501" to .8750"	19.06mm to 22.22mm
.8751" to 1.000"	22.23mm to 25.40mm

OVERALL LENGTH: 5 inches

Inch Size	Millimeter Size
.0100" to .0299"	.254mm to .761mm
.0300" to .0599"	.762mm to 1.52mm
.0600" to .2009"	1.53mm to 5.10mm
.2010" to .3749"	5.11mm to 9.52mm
.3750" to .6349"	9.53mm to 16.12mm
.6350" to .7500"	16.13mm to 19.05mm
.7501" to .8750"	19.06mm to 22.22mm
.8751" to 1.000"	22.23mm to 25.40mm

OVERALL LENGTH: 6 inches

Inch Size	Millimeter Size
.0100" to .0299"	.254mm to .761mm
.0300" to .0599"	.762mm to 1.52mm
.0600" to .2009"	1.53mm to 5.10mm
.2010" to .3749"	5.11mm to 9.52mm
.3750" to .6349"	9.53mm to 16.12mm
.6350" to .7500"	16.13mm to 19.05mm
.7501" to .8750"	19.06mm to 22.22mm
.8751" to .9375"	22.23mm to 23.81mm
.9376" to 1.000"	23.82mm to 25.40mm

No guarantee of straightness due to Centerless Grinding process on these products. Class X custom length gages are not returnable for credit or cancellation.



Taperlocks* Steel & Chrome

*Quick changeover!
The members pop out
for quick replacement.
Excellent choice for
larger diameter
inspection.

- NIST traceable
- Plus, Minus or Bilateral tolerances
- Class XX, X, Y or Z.
- Steel or Chrome



Taperlocks - Steel and Chrome

Unilateral Tolerances • GO = PLUS tolerance, NOGO = MINUS tolerance

Chrome Plates - Add 30% For XXX - Add 100% to XX prices.

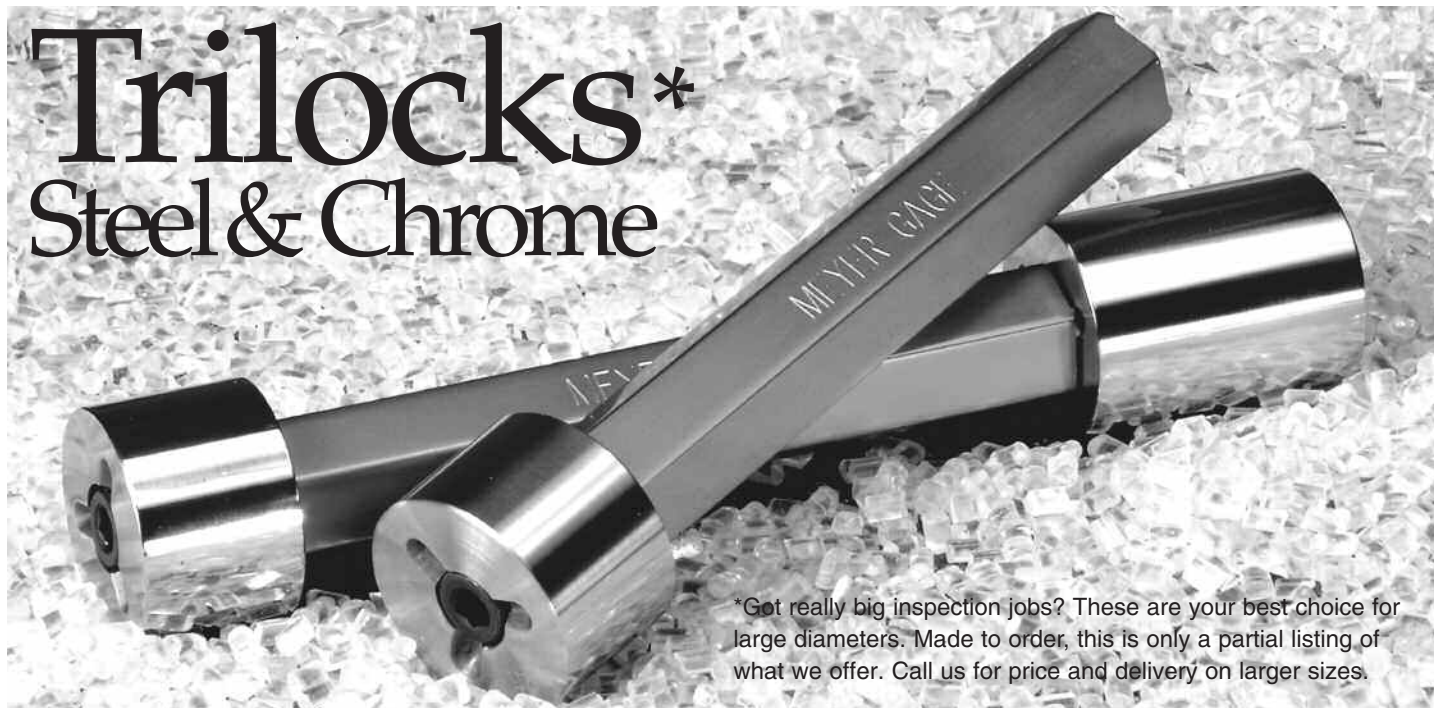
Size Range	Std. GO Member Only		Std. NOGO Member Only		Handle
	Class	Length	Length	No.	
.105 " to .150 " 2.67mm to 3.81mm	XX				
	X	3/8 "	7/32 "		
	Y	9.5mm	5.6mm	00	
	Z				
.150 " to .230 " 3.81mm to 5.84mm	XX				
	X	13/32 "	9/32 "		
	Y	10.3mm	7.1mm	0	
	Z				
.230 " to .365 " 5.84mm to 9.27mm	XX				
	X	3/4 "	5/16 "		
	Y	19.1mm	7.9mm	1	
	Z				
.365 " to .510 " 9.27mm to 12.95mm	XX				
	X	1 "	3/8 "		
	Y	25.4mm	9.5mm	2	
	Z				
.510 " to .825 " 12.95mm to 20.96mm	XX				
	X	1 1/4 "	1/2 "		
	Y	31.8mm	12.7mm	3	
	Z				
.825 " to 1.135 " 20.96mm to 28.83mm	XX				
	X	1 1/2 "	5/8 "		
	Y	38.1mm	15.9mm	4	
	Z				
1.135 " to 1.510 " 28.83mm to 38.35mm	XX				
	X	1 5/8 "	3/4 "		
	Y	41.3mm	19.1mm	5	
	Z				

*Taperlocks are not returnable for credit or cancellation.



Trilocks*

Steel & Chrome



*Got really big inspection jobs? These are your best choice for large diameters. Made to order, this is only a partial listing of what we offer. Call us for price and delivery on larger sizes.

Trilocks - Steel and Chrome

Unilateral Tolerances • GO = PLUS tolerance, NOGO = MINUS tolerance

Chrome Plates - Add 30% For XXX - Add 100% to XX prices up to 1.510" only.

Size Range	Std. GO Member Only		Std. NOGO Member Only		Handle
	Class	Length	Length	No.	
.760 " to .947 " 19.30mm to 24.05mm	XX				
	X	1 1/4 "	3/4 "		
	Y	31.8mm	19.1mm	2 1/2	
	Z				
.947 " to 1.135 " 24.05mm to 28.83mm	XX				
	X	1 3/8 "	3/4 "		
	Y	34.9mm	19.1mm	3 1/2	
	Z				
1.135 " to 1.510 " 28.83mm to 38.25mm	XX				
	X	1 1/2 "	3/4 "		
	Y	38.1mm	19.1mm	4 1/2	
	Z				
1.510 " to 2.010 " 38.25mm to 51.05mm	XX				
	X	1 7/8 "	7/8 "		
	Y	47.6mm	22.2mm	5 1/2	
	Z				
2.010 " to 2.510 " 51.05mm to 63.75mm	XX				
	X	2 "	7/8 "		
	Y	50.8mm	22.2mm	6	
	Z				
2.510 " to 3.010 " 63.75mm to 76.45mm	XX				
	X	2 "	1"		
	Y	50.8mm	25.4mm	7	
	Z				
3.010 " to 3.510 "	XX				
	X	2"	1"		
	Y		25.4mm	7	
	Z				

*Trilocks are not returnable for credit or cancellation.

Ring Gages*



The Meyer Difference.

- The Material.** We use only superb quality steels such as 06 or Alloy Steels such as 8620 and Heat Treat our blanks to a minimum of 58RC.
- The Stabilization Process.** Subsequent grinding operations can introduce heat and stress. Meyer puts all blanks through a stabilization process, cycling them through temperature extremes from -130°F to +300°F.
- The Precision Lapping Process.** "Lapping" is the finishing process that removes small amounts of material from the gage surface and brings it within its final tolerance limits.
- Inspection with NIST - traceable gages.** In our Metrology area conditions are a strict, cool 68°F where the relative humidity is between 30- 50% and all of our masters are traceable to NIST.

Chrome Ring Gages .125" - 4.010" (3.18 mm - 101.85 mm)

Size Range		Class XX	Class X	Class Y	Class Z
Inches	Millimeters				
Above to and including	Above to and including				
.150 - .185	3.81 - 4.70				
.185 - .230	4.70 - 5.84				
.230 - .365	5.84 - 9.27				
.365 - .510	9.27 - 12.95				
.510 - .825	12.95 - 20.96				
.825 - 1.135	20.96 - 28.83				
1.135 - 1.510	28.83 - 38.35				
1.510 - 2.010	38.35 - 51.05				
2.010 - 2.510	51.05 - 63.75				
2.510 - 3.010	63.75 - 76.45				
3.010 - 3.510	76.45 - 89.15				
3.510 - 4.010	89.15 - 101.85				

MASTER: bilateral (split) tolerance. GO: unilateral (one way) **minus** tolerance. NOGO: unilateral (one way) **plus** tolerance. Ring Gages are manufactured in accordance with ANSI spec B89.1.6 - 1989. ROUNDNESS and TAPER of all gages will not exceed 50% of applicable gagemaker's size tolerance and are nonaccumulative.

*Ring gages are not returnable for credit or cancellation.



Steel Ring Gages .040001" - 4.010" (1.02 mm - 101.85 mm)

Size Range		Class XX	Class X	Class Y	Class Z
Inches Above to and including	Milimeters Above to and including				
.040001 - .100	1.02 - 2.54				
.100001 - .150	2.54 - 3.81				
.150001 - .185	3.81 - 4.70				
.185001 - .230	4.70 - 5.84				
.230001 - .365	5.84 - 9.27				
.365001 - .510	9.27 - 12.95				
.510001 - .825	12.95 - 20.96				
.825001 - 1.135	20.96 - 28.83				
1.135001 - 1.510	28.83 - 38.35				
1.510001 - 2.010	38.35 - 51.05				
2.010001 - 2.510	51.05 - 63.75				
2.510001 - 3.010	63.75 - 76.45				
3.010001 - 3.510	76.45 - 89.15				
3.510001 - 4.010	76.45 - 101.85				

MASTER: bilateral (split) tolerance. GO: unilateral (one way) **minus** tolerance. NOGO: unilateral (one way) **plus** tolerance.
 Ring Gages are manufactured in accordance with ANSI spec B89.1.6 - 1989. ROUNDNESS and TAPER of all gages will not exceed 50% of applicable gagemaker's size tolerance and are nonaccumulative.

Tungsten Carbide Ring Gages .040001" - 4.010" (1.02 mm - 101.85 mm)

Size Range		Class XX	Class X	Class Y	Class Z
Inches Above to and including	Milimeters Above to and including				
.040001 - .100	1.02 - 2.54				
.100001 - .150	2.54 - 3.81				
.150001 - .185	3.81 - 4.70				
.185001 - .230	4.70 - 5.84				
.230001 - .365	5.84 - 9.27				
.365001 - .510	9.27 - 12.95				
.510001 - .825	12.95 - 20.96				
.825001 - 1.135	20.96 - 28.83				
1.135001 - 1.510	28.83 - 38.35				
1.510001 - 2.010	38.35 - 51.05				
2.010001 - 2.510	51.05 - 63.75				
2.510001 - 3.010	63.75 - 76.45				
3.010001 - 3.510	76.45 - 89.15				
3.510001 - 4.010	89.15 - 101.85				

ALL RINGS tungsten carbide inserts with steel jackets. MASTER: bilateral (split) tolerance. GO: unilateral (one way) **minus** tolerance. NOGO: unilateral (one way) **plus** tolerance. Ring Gages are manufactured in accordance with ANSI spec B89.1.6 - 1989. ROUNDNESS and TAPER of all gages will not exceed 50% of applicable gagemaker's size tolerance and are nonaccumulative. SIZES ABOVE AND BELOW THOSE LISTED will be quoted on request.



Custom Progressive Gages*



When you need to check parts quickly, Progressive plug gages are the best choice. Both the GO and NOGO diameters are stepped on a single gage member. All members are securely attached to either a trilock or taperlock handle. All handles are marked with sizes and direction of tolerance.

- Class XX, X, Y, or Z
- NIST traceable
- GO, NOGO tolerances
- Tool Steel 60/62 Rockwell C
- Certificate of Accuracy included
- Additional marking available

Unilateral Tolerance, GO - Plus Tolerance, NOGO - Minus Tolerance, Chrome Plates - Add 30%

Size - Range	Class	Tolerance Inches	AGD Progressive Member			Handle No.
			Member Length	GO Portion	NOGO Portion	
TAPERLOCK STYLE .105 in. to .150 in. 2.67 mm to 3.81 mm	XX	.00002				
	X	.00004	²³ / ₃₂ in.	³ / ₈ in.	⁷ / ₃₂ in.	00
	Y	.00007	18.3 mm	9.5 mm	5.6 mm	
	Z	.00010				
.1501 in. to .230 in. 3.81 mm to 5.84 mm	XX	.00002				
	X	.00004	¹³ / ₁₆ in.	¹³ / ₃₂ in.	⁹ / ₃₂ in.	0
	Y	.00007	20.6 mm	10.3 mm	7.1 mm	
	Z	.00010				
.2301 in. to .365 in. 5.84 mm to 9.27 mm	XX	.00002				
	X	.00004	¹³ / ₁₆ in.	³ / ₄ in.	⁵ / ₁₆ in.	1
	Y	.00007	30.2 mm	19.1 mm	7.9 mm	
	Z	.00010				
.3651 in. to .510 in. 9.27 mm to 12.95 mm	XX	.00002				
	X	.00004	1 ¹ / ₂ in.	1 in.	³ / ₈ in.	2
	Y	.00007	38.1 mm	25.4 mm	9.5 mm	
	Z	.00010				
.5101 in. to .825 in. 12.95 mm to 20.96 mm	XX	.00002				
	X	.00004	1 ⁷ / ₈ in.	1 ¹ / ₄ in.	¹ / ₂ in.	3
	Y	.00007	47.6 mm	31.8 mm	12.7 mm	
	Z	.00010				
.8251 in. to 1.135 in. 20.96 mm to 28.83 mm	XX	.00003				
	X	.00006	2 ¹ / ₈ in.	1 ³ / ₈ in.	⁵ / ₈ in.	4
	Y	.00009	54.0 mm	34.9 mm	15.9 mm	
	Z	.00012				
1.1351 in. to 1.510 in. 28.83 mm to 38.35 mm	XX	.00003				
	X	.00006	2 ³ / ₈ in.	1 ¹ / ₂ in.	³ / ₄ in.	5
	Y	.00009	60.3 mm	38.1 mm	19.1 mm	
	Z	.00012				
TRILOCK STYLE 1.5101 in. to 2.010 in. 38.35 mm to 51.05 mm	XX	.00004				
	X	.00008	2 ⁷ / ₈ in.	1 ⁷ / ₈ in.	⁷ / ₈ in.	5
	Y	.00012	73.0 mm	47.6 mm	22.2 mm	
	Z	.00016				
2.0101 in. to 2.510 in. 51.05 mm to 63.75 mm	XX	.00004				
	X	.00008	3 in.	2 in.	⁷ / ₈ in.	6
	Y	.00012	76.2 mm	50.8 mm	22.2 mm	
	Z	.00016				
2.5101 in. to 3.010 in. 63.75 mm to 76.45 mm	XX	.00005				
	X	.00010	3 in.	2 in.	⁷ / ₈ in.	7
	Y	.00015	76.2 mm	50.8 mm	22.2 mm	
	Z	.00020				
3.0101 in. to 3.510 in. 76.45 mm to 89.15 mm	XX	.00005				
	X	.00010	3 in.	2 in.	⁷ / ₈ in.	7
	Y	.00015	76.2 mm	50.8 mm	22.2 mm	
	Z	.00020				
3.5101 in. to 4.010 in. 89.15 mm to 101.85 mm	XX	.00005				
	X	.00010	3 ¹ / ₈ in.	2 ¹ / ₈ in.	⁷ / ₈ in.	7
	Y	.00015	79.4 mm	54.0 mm	22.2 mm	
	Z	.00020				
4.0101 in. to 4.510 in. 101.85 mm to 114.55 mm	XX	.00005				
	X	.00010	3 ¹ / ₈ in.	2 ¹ / ₈ in.	⁷ / ₈ in.	7
	Y	.00015	79.4 mm	54.0 mm	22.2 mm	
	Z	.00020				

*Progressives are not returnable for credit or cancellation.



Master Setting Discs*

You can use these Master Discs to calibrate your measuring equipment. They are a must for your calibration lab and your inspection areas. Meyer's Master Discs are available in three styles and come with a Certificate of Accuracy.



- Class XX, X or Y
- GO, NOGO, Bilateral tolerances available
- Steel 60/62 Rockwell C
- Comes complete with end grips
- All inch masters are furnished with black insulators
- All metric masters are furnished with yellow insulators
- Red and Green insulators are available on special order
- Roundness is within half of tolerance

*Note: For the range above 1.510" to and including 8.510" A.G.D. standards for style #2 call for style #3 master discs separated by an A.G.D. separator plate and linked together with a tie rod and insulators.

Size – Range	Class	Tolerance		STYLE #2 – Unilateral (GO plus NOGO minus)			STYLE #3 – Bilateral (Split) tolerance				
		Inches	Lgth.	Style #1 Steel	Chrome	Lgth.	Style #2 Steel	Chrome	Lgth.	Style #3 Steel	Chrome
.150 in. to .230 in. 3.81 mm to 5.84 mm	XX	.00002									
	X	.00004	7/8 in.			7/8 in.			7/16 in.		
	Y	.00007	22.2 mm			22.2 mm			1.1 mm		
.2301 in. to .365 in. 5.84 mm to 9.27 mm	XX	.00002									
	X	.00004	1 in.	1 in.	1	1 in.			1/2 in.		
	Y	.00007	25.4 mm			25.4 mm			12.7 mm		
.3651 in. to .510 in. 9.27 mm to 12.95 mm	XX	.00002									
	X	.00004	1 1/8 in.		1	1 1/8 in.			9/16 in.		
	Y	.00007	28.6 mm			28.6 mm			14.3 mm		
.5101 in. to .825 in. 12.95 mm to 20.96 mm	XX	.00002									
	X	.00004	1 1/4 in.		1	1 1/4 in.			5/8 in.		
	Y	.00007	31.8 mm			31.8 mm			15.9 mm		
.8251 in. to 1.135 in. 20.96 mm to 28.83 mm	XX	.00003									
	X	.00006	1 3/8 in.		1	1 3/8 in.			1 1/16 in.		
	Y	.00009	34.9 mm			34.9 mm			17.5 mm		
1.1351 in. to 1.510 in. 28.83 mm to 38.35 mm	XX	.00003									
	X	.00006	1 5/8 in.	1		1 5/8 in.			13/16 in.		
	Y	.00009	41.3 mm			41.3 mm			20.6 mm		
1.5101 in. to 2.010 in. 38.35 mm to 51.05 mm	XX	.00004									
	X	.00008	1 7/8 in.			2 in.			7/8 in.		
	Y	.00012	47.6 mm			50.8 mm			22.2 mm		
2.0101 in. to 2.510 in. 51.05 mm to 63.75 mm	XX	.00004									
	X	.00008	2 in.			2 in.			7/8 in.		
	Y	.00012	50.8 mm			50.8 mm			22.2 mm		
2.5101 in. to 3.010 in. 63.75 mm to 76.45 mm	XX	.00005									
	X	.00010	2 in.			2-1/4"			1"		
	Y	.00015	50.8 mm			57.2 mm			25.4 mm		
3.0101 in. to 3.510 in. 76.45 mm to 89.15 mm	XX	.00005									
	X	.00010	2 in.			2-1/4"			1"		
	Y	.00015	50.8 mm			57.2 mm			25.4 mm		
3.5101 in. to 4.010 in. 89.15 mm to 101.85 mm	XX	.00005									
	X	.00010	2 1/8 in.			2-1/4"			1"		
	Y	.00015	54.0 mm			57.2 mm			25.4 mm		
4.0101 in. to 4.510 in. 101.85 mm to 114.55 mm	XX	.00005									
	X	.00010	2 1/8 in.			2-1/4"			1"		
	Y	.00015	54.0 mm			57.2 mm			25.4 mm		
4.5101 in. to 5.010 in. 114.55 mm to 127.25 mm	XX	.000065									
	X	.00013	2 in.			2-1/4"			1"		
	Y	.00019	54.0 mm			57.2 mm			25.4 mm		
5.0101 in. to 5.510 in. 127.25 mm to 139.95 mm	XX	.000065									
	X	.00013	2 1/8 in.			2-1/4"			1"		
	Y	.00019	54.0 mm			57.2 mm			25.4 mm		
5.5101 in. to 6.0100 in. 139.95 mm to 152.65 mm	XX	.000065									
	X	.00013	2 1/8 in.			2-1/4"			1"		
	Y	.00019	54.0 mm			57.2 mm			25.4 mm		

Anything over above size - call for pricing. *Master Discs are not returnable for credit or cancellation.



Hex Gages*



Fractional Sizes D.E. Hex Gages to ANSI B18.3

Size	Size
0.028	7/32"
0.035	1/4"
0.05	5/16"
1/16"	3/8"
5/64"	7/16"
3/32"	1/2"
7/64"	9/16"
1/8"	5/8"
9/64"	3/4"
5/32"	7/8"
3/16"	1"

Metric Sizes D.E. Hex Gages to ANSI B18.3

Size	Size
0.70 mm	6.00 mm
0.90 mm	8.00 mm
1.30 mm	10.00 mm
1.50 mm	12.00 mm
2.00 mm	14.00 mm
2.50 mm	17.00 mm
3.00 mm	19.00 mm
4.00 mm	22.00 mm
5.00 mm	24.00 mm

Meyer Gage now has a complete line of GO/NOGO Hex Plug Gages manufactured to specs ANSI/ASME B107.17M and ANSI B18.3. Hex gages are perfect for inspecting machine head fasteners. All Hex gage assemblies are marked with the size.

Fractional Sizes D.E. Hex Gages to ANSI/ASME B107.17M

Size	Size
1/8"	1 5/16"
5/32"	1 3/8"
3/16"	1 7/16"
13/64"	1 1/2"
7/32"	1 9/16"
15/64"	1 5/8"
1/4"	1 11/16"
9/32"	1 3/4"
5/16"	1 13/16"
11/32"	1 7/8"
3/8"	1 15/16"
7/16"	2"
1/2"	2 1/16"
9/16"	2 1/8"
19/32"	2 3/16"
5/8"	2 1/4"
21/32"	2 5/16"
11/16"	2 3/8"
3/4"	2 7/16"
25/32"	2 1/2"
13/16"	2 9/16"
7/8"	2 5/8"
15/16"	2 11/16"
1"	2 3/4"
1 1/16"	2 13/16"
1 1/8"	2 7/8"
1 3/16"	2 15/16"
1 1/4"	3"

Metric Sizes D.E. Hex Gages to ANSI/ASME B107.17M

Size	Size
2 mm	28 mm
3 mm	29 mm
3.2 mm	30 mm
4 mm	31 mm
5 mm	32 mm
5.5 mm	33 mm
6 mm	34 mm
6.3 mm	35 mm
7 mm	36 mm
8 mm	37 mm
9 mm	38 mm
10 mm	39 mm
11 mm	40 mm
12 mm	41 mm
13 mm	42 mm
14 mm	43 mm
15 mm	44 mm
16 mm	45 mm
17 mm	46 mm
18 mm	47 mm
19 mm	48 mm
20 mm	49 mm
21 mm	50 mm
22 mm	55 mm
23 mm	60 mm
24 mm	65 mm
25 mm	70 mm
26 mm	75 mm
27 mm	

- All Hex Gages are Class Z tolerance
- Made of steel
- Heat treated to 60/62 Rockwell C
- All prices include a GO/NOGO and handle
- NIST traceable
- Additional marking available
- Certificate of Accuracy included

*Hex Gages are not returnable for credit or cancellation.

